


**Terry Fox Run**  
 Chapleau High School Track & Field  
 Sunday, September 19th



# CHAPLEAU EXPRESS

Vol. 9, Issue 1, September 5, 2004

 Girl Guides first meeting  
**Monday, September 13 @ 6:30 to 8:00 p.m.**  
 Trinity United Church  
 Rachel Foley at 864-9028

## Soccer season ends on a successful note

Again this summer, dozens of Chapleau boys and girls were busy participating in a sport which is becoming increasingly popular in North America.

Whether they are being attracted by the World Cup or the need for physical exercise, the youngsters, starting at age 7 participated in the annual program offered by Chapleau

Soccer League.

Last week-end the season ended, as the teams took to the Earle J. Freeborn Field of Dreams at the High School to compete in an annual tournament.

The spectator stands were filled for two days as family and friends gathered to cheer the teams on.

Observers of local soccer have noticed an increase in skills

displayed by the players. It was most notable this year in the 10 to 13 year old group, as most have been active for many years. some of the players are as young as 7 years.

The spectators were treated to some sharp passing plays and fast action as the youngsters displayed their skills acquired and developed over the summer on a soccer

pitch described as excellent.

The games ended with awards for 1st, 2nd and 3rd place teams and there were many individual awards handed out as well.

The coaches and officials were lauded for devoting so much time and effort towards encouraging the community's youngsters to get involved.



**The Bronze Medal Winners in the 7-9 division, the Green Machine.**

**FRONT ROW-LtoR: Robert Tessier, Colin Lindquist & Tiffany Card.**

**BACK ROW: Karine Carriere, Jeremy Tremblay, Coach Trevor Guthrie, Tyler Card & Nathan Huard-Ouellet.**



**The gold medal winners in the 7-9 years old bracket, The Yellow Jackets.**

**FRONT ROW LtoR- Cole Bignucolo and Mackenzie Martel.**

**MIDDLE ROW-Braedan Martel, Jamie Fortin, Remington Doyon and Joshua Raposo.**

**BACK ROW- Cole Hamil, Ceilidh O'Hearn, Jessica Tremblay, Layla Pintar and Coach Tim Barnes.**



**The Silver medal winners in 7-9 years old class, the Red Rockets.**

**FRONT ROW-LtoR- Sarah Cooke, Helena Delouniere, Krista Leach, Jayme Martel, Jason Vandal and Nolan Jones.**

**BACK ROW- Jesse Cloutier, Mona Larocque, Coach Rolph Fuches, Brandon Bernier and Riley Furguson.**



## University for the North concept receives local support

The proposal to bring university education to communities in northeastern Ontario has been given early support by the Chapleau township municipal council.

After hearing an outline of the concept, which a proponent of Ontario Northeast University (ONE U) presented last Monday evening, the township council acted on a recommended by Councillor Richard Bignucolo to advance \$250 to help get the project up and running.

The project will acquire background research, perform a regional skills and programs inventory, perform a needs gap analysis, identify target markets and make recommendations for program delivery.

This community could join the City of Timmins and the towns of Iroquois Falls and Kapuskasing and the township of Black River

Matheson who are the early partners in the proposal.

"Northeastern Ontario is one of the only areas in Canada with sufficient population without a dedicated University", said Brent Savard, an official with the Timmins Economic Development Committee, which is advancing the project.

The total cost of the project is \$100,000 with \$70,000 already secured through government funding.

Council was told youth out-migration is increasing in our region, therefore our university must be unconventional, high quality, perhaps specialized to retain them.

The Ontario Northeast University would utilize telecommunications technology you link to the best universities around the world. It would offer programs to meet the time commitments of the population with year

round programs at unconventional hours when needed and offer programs that help the communities grow in the new knowledge economy and encourage entrepreneurship.

In supporting the concept. Chapleau Mayor Earle J. Freeborn told council the university would probably bring opportunities to the North, including Chapleau. He added the proposal was a good idea and noted it comes at a time when the community is embarking on a telecommunications infrastructure upgrade.

The \$250 pledged by Chapleau would assist in paying the university's incorporation costs.

Savard had said ideally Chapleau would commit to \$3,000 however he told council to contribute as much as you can.

Councillor Richard Bignucolo asked that the township be kept up to date on the progress of the project.

### Thank you

I would like to thank all my friends and relatives for their concern while I was in the Timmins District Hospital.

A Special Thanks to Dr. Shapiro and the nurses for their care.

Sincerely yours,  
*Pat Mizuguchi*

### In Loving Memory

*Peter Simpson*  
who passed away September 5, 2003

And if I go, While you're still here...

Know that I still Live on,  
Vibrating to a different measure  
behind a thin veil you cannot see through.

You will not see me,  
so you must have faith.

I wait the time when we can soar together again,  
both aware of each other.

Until then, live your life to the fullest,  
And when you need me,  
Just whisper my name in your heart,  
... I will be there.

Verse by  
Colleen Hitchcock

The Chapleau Express is published every Sunday.  
Box 457  
Chapleau (Ont.)  
POM 1K0

Telephone - Fax : 705-864-2579  
e-mail : jprince@onlink.net

**Deadline for receiving ads is Wednesday at 4 p.m.**

The Chapleau Express is delivered free of charge to every household each Sunday. If you have any comments, please feel free to contact us.

Canadian Publications Products Sales Agreement #130183799

### Chapleau Real Estate Limited Broker



**89 Monk Street**  
Large semi-detached home with recent extensive renovations. New porch with washer/dryer hook-up, flooring in kitchen, paint throughout, bath, and more. Call us today to check it out!  
\$59,900.00



**85 Monk Street**  
Large, 3 bedroom semi-detached home. New laminate floor and paint on upper level. New ceramic at front entrance and deck at rear. Excellent price to house a medium to large family!  
\$49,900.00



**89 Monk Street**  
Large semi-detached home with recent extensive renovations. New porch with washer/dryer hook-up, flooring in kitchen, paint throughout, bath, and more. Call us today to check it out!  
\$59,900.00



**19 Young Street**  
Four unit apartment building sited on a corner lot near downtown and grocery store. Newer siding, windows and roofing. Good income potential!  
\$79,000.00

To View More of Our Exclusive Listings  
Visit our display window at 106 Birch Street or log on to  
chapleaurealestate.com  
Dean J. Landry, Broker Lisa A. Landry, Sales  
Phone: 864-1115

## NAFTA Panel orders U.S. to remove duties on Canadian softwood lumber

A North American Free Trade panel reviewing the softwood lumber duties imposed by the U.S. has, for the third time, told the U.S. International Trade Commission that its findings are not supported in fact, and that their ruling must be reversed to find no "threat of injury" to domestic lumber producers within ten days.

In complying with this NAFTA panel decision that the ITC finding in imposing 19 percent countervailing duties against lumber imports, the U.S. would end its case against Canada, ending the duties.

"While the U.S. is likely to keep finding legal maneuvers to keep its case alive, we believe that its continual string of losses on the injury case, and its repeated losses on the antidumping

calculations, should send a clear signal that the cases should end now, and consumers should not continue to be penalized and priced out of housing markets because of the protectionist domestic producers self interests," said Susan Petniunas, spokesperson for the 17-member alliance, American Consumers for Affordable Homes (ACAH), representing 95 percent of U.S. lumber consumption, is comprised of U.S. trade associations and companies.

Under international trade rules, if the ITC cannot prove its finding of a threat of material injury, or injury, there is no legal basis for the Commerce Department imposing duties to protect the domestic market.

Commerce imposed the duties based on cases brought by U.S. producers, led

primarily by a group of southern land owners, and International Paper, Potlatch, Plum Creek, Sierra Pacific, Temple Inland, members of the Coalition for Fair Lumber Imports.

More than 300,000 American families are denied the opportunity to buy a new home because of the current duties that are nearly 28 percent on every dollar of lumber used in home construction, since they can not qualify for a mortgage.

More than 100 bipartisan members of the U.S. Senate and House of Representatives have called on the Bush administration over the past three years to end its challenge to Canada, and not impose any export taxes, duties, or quotas on lumber that are essential to our housing market and our economy.

New resolutions

were introduced in the current session of Congress urging free trade in lumber between the U.S. and Canada.

Industries that depend on lumber as an input and that oppose import restrictions include manufacturers of value-added wood products, lumber dealers, manufactured and on-site home builders, and remodeling contractors and individuals. These industries employ more than 6.5 million workers, 25 to one when compared with those in the forestry industry.

**You can always  
count on the  
Chapleau  
Express.**

**Call us for coverage  
of your event.**

**864-2579**



### CANADIAN PACIFIC RAILWAY

Canadian Pacific Railway would like to thank the following people and organizations for their great help and donations in making the Health and Safety Day for their employees an enormous success.

Collins Home Hardware  
Pits Place  
NAPA

Chapleau Coffee Fund  
Turning Point  
Kathleen Johnson R.M.T.  
Chapleau Fire Fighters Association  
C.P. Field Operations, Chapleau  
IBEW Chapleau  
T.C.R.C. Chapleau  
C.A.W. Chapleau  
OMA Community Wellness Program  
Sudbury & District Health Unit, Health Protection, Health Promotion and Diabetes Program.

T. Labrier  
Sharleen Lavoie  
Judy Imbeault  
Lorie Desbiens  
Jeannette Laporte  
Chapleau Day Care Centre  
Odd Fellows  
Chapleau Joint Health & Safety Committee  
I.S.N.C.  
E.F.A.P.  
S & C Chapleau  
OMA Healthy Baby Healthy Children Program

And thank you to the employees and their families that made the event an immense success.

P.S.: A thank you to any else that we may have forgotten.

# Literacy services in Chapleau to be maintained says government

The Minister of Training, Colleges and Universities, says literacy services here, which were in jeopardy with the closure of the Sault College campus will be maintained.

In a letter to Mayor Earle J. Freeborn, Mary Anne Chambers says her Ministry has been working with the College and another literacy provider in the

township to ensure service is maintained and transferred within the community.

"Decisions about the delivery of these services will be more shortly, so that programming may begin in time for fall semester", states the minister in a letter to the Mayor.

Mayor Freeborn had written the Minister expressing concern

over the closure of the campus here.

The Minister also stated that Collège Boréal will not be closing its office in Chapleau. However, as a result of the high demand for services in many other communities, the College will be reducing the availability of a Job Connect counsellor to one day per week.

"This decision was made due to the significant decrease in demand for Job Connect services in Chapleau area, and will be monitored for a period of three months", stated the Minister.

In the meantime, the Job Connect office will remain open five days a week, in its co-location with the Manitoulin and Sudbury District Social Services Adjustment Board in the mini mall. Staff at the board will distribute information about Job Connect services.

In addition, they will redirect all telephone calls, faxes, and e-mail message, as well as set appointments for the Job Connect counsellor.

"Collège Boréal is confident that it will respond effectively to the employment and training needs of employers and youth in the township of Chapleau", states the Minister's letter.

## Bullying: Signs to look for

(NC)-Bullying is increasingly being recognized as having harmful, even deadly consequences for children. At a recent forum for Boys and Girls Club representatives from across Canada, best-selling author and parent educator Barbara Coloroso explained how bullying begins.

"Bullying is not about anger; it is not about a conflict; it's about contempt for another human being.

"When people have contempt for someone," she added "they deem them inferior and undeserving of respect and that can lead to acting without shame or compassion."

Signs that a child may be a victim of bullying:

- Feelings of rejection
- Low self-esteem
- Poor school grades
- Isolation or withdrawal from group activities at school and outside of school
- Aggressiveness, nervousness, extreme sensitivity
- Fear or refusal to go to school

With the support of Sears Canada's Sears Young Futures program, Boys and Girls Clubs across Canada offer children and youth a wide variety of after-school activities including programs on bullying prevention, anger management and conflict resolution. Boys and Girls Clubs of Canada also provides tips on dealing with bullying at [www.bgccan.com](http://www.bgccan.com).

- News Canada

**Pimii Kamik Gas Bar & Gift Shop**  
 Is open Monday through Friday from 7am - 10pm  
 Saturday & Sunday from 7am - 9pm  
 Located at 566 Fox Lake Road  
 Chapleau Cree First Nation

Also available is a selection of  
 Native crafts, clothing and local art.

We also refill propane cylinders.



**BEAR WISE**

**Don't Feed the Bears:**  
 Pick all ripe fruit off trees, and  
 remove vegetables and fallen fruit  
from the ground.

In an immediate emergency call your local police or 911.  
 To report bear problems call:  
**1 866 514-2327** (1 866 514-BEAR) TTY 705 945-7641

For more information, visit our website:  
[bears.mnr.gov.on.ca](http://bears.mnr.gov.on.ca)

Ministry of Natural Resources Ontario

**DOMTAR INC.**

**NOTIFICATION OF SLASH PILE BURNING**

I wish to advise that Domtar Inc., as part of its ongoing management objectives, will be burning slash piles from September 27 to October 6, 2004, and from October 18 until December 31, 2004, if conditions are favourable on the Spanish Forest and the Pineland/Martel Forest.

Ignition will take place at 8:00 until 19:00 any time from September 27 to October 6, 2004, and from October 18th to December 31, 2004.

Signs will be erected on roads leading into the slash pile burning areas.

The purpose of these burns is to remove an obvious fire hazard from along travelled areas and to prepare areas for tree planting.

For more information, please contact Tom MacLean at (705) 267-1000, ext 231.

Renseignements en français : Ministère des richesses naturelles  
 Timmins (705) 235-1300  
 Sudbury (705) 564-7823

# Packing school lunches don't have to be a drag

(NC)-The end of summer means saying goodbye to the relaxing days spent at the beach or picnics in the park, and saying hello to the busy schedules of the school year. It also means for some parents the challenge of packing school lunches that are nutritious, safe and, most importantly, that kids will eat! Here are some easy tips that will

make packing lunch a breeze.

**"Cool" Lunch** – Pack a cold source in the lunch bags, such as frozen Tetra Pak cartons, to help keep lunches cool until eaten. The drinks will thaw by lunchtime and provide kids with a cold, refreshing beverage. Tetra Pak cartons are kid-friendly and recyclable.



**Plan Ahead** – To save time in the morning, pack lunches the night before. Make a week's worth of sandwiches on Sunday and freeze

them for weekday lunches.

**Grab and go** – For added convenience, buy ready-to-eat foods in individual-sized portions. Another option is to buy foods in bulk size and then separate them out into smaller portions in fun reusable containers for kids to take to school.

**Involve the kids** – To try and ensure kids eat their lunches, get them involved in the planning and packing. Kids are more likely to eat food that they choose.

**Have fun** – Go shopping with your child to pick out an insulated lunch box or container that he or she will enjoy carrying to

**Snack time!** – Kids need something quick and fun to keep them going between meals. Pack a banana and a chocolate pudding so that kids can dip the banana and enjoy a tasty and healthy "fondue".

**Environmentally Friendly** – Use packaging that is recyclable for lunches such as recyclable Tetra Pak drink boxes.

For more lunch preparation, breakfast and snack ideas, please visit [www.tetrapak.ca](http://www.tetrapak.ca) and look for the downloadable healthy eating guide.

- News Canada

## If you too must choose a new financial institution, why on earth are you thinking you'll just go to the other bank?

*Lose your bank and find your way.*

*You have a full-service, professional alternative shaped to fit our environment, your community and small business needs. We look beyond just the numbers and see the great people who make this region grow.*

*We build jobs here. We invest here. You come first. The North comes first.*

*Make no mistake: Closing a bank is choosing to put profits before people. If you ever had any doubt, now you can rest assured – for banks it really is all about the money.*

*We are 40,000 members strong and we've built your banking alternative.*

We're Northern Credit Union. And you can be too.



# NORTHERN CREDIT UNION

natural. human. resources.



### NOUVEAUTÉS À LA BIBLIOTHÈQUE MUNICIPALE DE CHAPLEAU

- Roadmaster - Stephen King
- Voeux secrets - Danielle Steel
- Coucher de soloeil à Saint-Tropez - Steel
- Le miroir aux mensonges - Krentz
- Un dangereux secret - Nora Roberts
- Des étoiles jumelles - Marie Gagnon

Anthony Pucci, Hons. B. Comm. P.F.P.



Investment Advisor  
1-800-557-2396  
Next regular visit to the Chapleau Branch of the Royal Bank will be on

TUESDAY  
September 14, 2004

ANTHONY WILL BE PLEASED TO ADVISE YOU ON A WIDE VARIETY OF INVESTMENT SERVICES

- Personalized Financial Planning • Retirement Planning
- Estate Planning • Investment Strategies
- Tax Planning Strategies • Portfolio Analysis
- RSP & RIF Strategies • Mutual Fund Analysis & Investment
- Insurance • Early Retirement Options
- RSP Maturity Options • Global Investing
- GIC's Cds & other Fixed Income Investments
- Interest Rate Protection
- Will, Probate, Executors and Powers of Attorney



APPOINTMENTS CAN BE MADE BY CALLING 1-800-557-2396

RBC Dominion Securities and Royal Bank are separate corporate entities which are affiliated

# La francophonie en folie



## ÉCOLE SACRÉ-COEUR ET ÉCOLE SECONDAIRE CATHOLIQUE TRILLIUM LA RENTRÉE... UN BEAU TEMPS DE L'ANNÉE (POUR LES ENFANTS OU LES PARENTS?)

C'est reparti! Les vacances se terminent et déjà, il faut penser au retour. Les enfants reprennent le chemin de l'école. Mardi et les jours suivants, ce sont les élèves de la maternelle à la 12<sup>e</sup> année qui entameront une nouvelle année scolaire. Nouvel environnement, nouveaux enseignants, nouveaux amis...

Le succès de votre enfant à l'école dépend de plusieurs facteurs. D'ailleurs, certaines recherches démontrent que la

réussite et l'épanouissement de l'enfant sont associés à la participation et à l'engagement des parents. Le personnel enseignant ainsi que votre enfant doivent pouvoir compter sur votre appui constant. Il existe plusieurs façons d'accompagner votre enfant dans son éducation. Vous pouvez manifester votre intérêt dans son apprentissage en valorisant la langue française et sa culture, en multipliant les occasions de communiquer en français,

en l'aidant à faire ses devoirs, en assistant aux réunions de parents et en participant, dans la mesure du possible, aux activités de l'école et du conseil d'école.

N'hésitez pas à communiquer avec la direction et le personnel de l'école pour leur faire part de vos besoins et de vos préoccupations concernant l'éducation de votre enfant. Nous tenons à vous remercier très sincèrement de votre

précieuse collaboration.

Bonne rentrée scolaire 2004-2005!  
Elle sonnera mardi prochain pour des milliers d'élèves et... de parents!

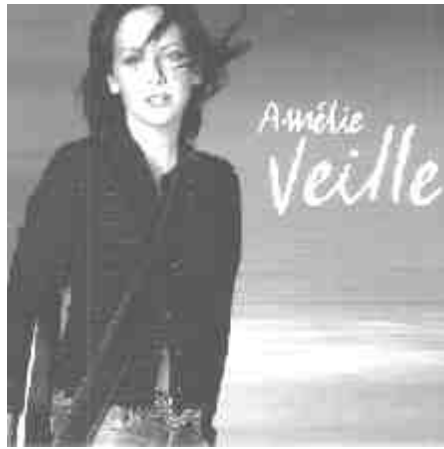
Pour voir ce qui se passe comme activités à Chapleau, visitez le :

[www.francochapeau.ca](http://www.francochapeau.ca)

### AMÉLIE VEILLE

C'est le 2 octobre que le Centre culturel Louis-Hémon présentera l'auteure-compositeure et interprète, Amélie Veille. Enfant unique, elle est née et a grandi à Saint-Georges de Beauce. Toute jeune, elle alimente une curiosité naturelle en notant soigneusement ses expériences et états d'âmes dans son journal, inspirée par sa grand-mère. À huit ans, elle connaît son premier contact avec le public, alors qu'elle chante avec la chorale les Rossignols. Plus tard, elle reçoit sa première guitare électrique et forme un groupe avec des amis. À seize ans, Amélie marie l'un de ses textes à sa musique. Amélie Veille, auteure-compositrice-interprète est née. Amélie complète un certificat en littérature à l'université et en ressort avec une profonde conviction : elle veut vivre et gagner sa vie à écrire et à chanter ses chansons. Douce-amères, ses chansons séduisent par leur humanité et leur poésie piquante ancrées dans l'air du temps. Construit par touches très personnelles, son univers émeut aussi par sa sincérité, son authenticité et par le sentiment de moderne solitude qui s'en dégage. Amélie fait souffler une brise rafraîchissante sur la chanson folk québécoise.

Elle n'a que vingt-trois ans, pourtant Amélie Veille fait déjà beaucoup parler d'elle. Elle a remporté plus d'une demi-douzaine de prix : gagnante du Prix



Création à Cégeps en Spectacle (2000) à lauréate des prix Interprète et Auteur-compositeur-interprète du festival Pully-Lavaux à l'heure du Québec de Suisse.

Amélie peut se réjouir du chemin parcouru. En quatre ans, elle a donné plus d'une centaine de concerts au Québec, en France et en Suisse. Elle a chanté en première partie des spectacles de Louise Forestier, Martin Deschamps, Daniel Lavoie. Lors des FrancoFolies de Montréal 2004, elle y a participé à trois reprises entourée d'artistes tel que Gabrielle Destroismaisons et Annie Major-Matte.

Amélie Veille vous présentera un spectacle chaleureux avec des textes mordants et des mélodies accrocheuses. Un rendez-vous à ne pas manquer ! Ce spectacle est 100% garantie ou argent remis!

### LE "COFFRE-FUN" EST ARRIVÉ ...

Bonjour chers parents et amis(es),

Pour ceux qui ne me connaissent pas, mon nom est Johanne Demers. Je demeure à Chapleau depuis 1988 et j'ai toujours travaillé avec des enfants à l'intérieur de différents projets comme le programme d'Enrichissement des enfants par les Arts, la Ribambelle, cours de guitare privé, et d'autres projets scolaires francophones et anglophones. En ayant observé et travaillé avec plusieurs enfants, j'ai une bonne idée de ce que vos enfants aiment et ce qui les amusent, de ce qui les font vibrer et les rendent heureux. Mon expérience indique que les enfants

apprennent plus vite dans un environnement positif et amusant, comme nous, d'ailleurs, les adultes.

Je suis tellement contente de vous parler du nouveau projet d'alphabétisation familiale au centre FormationPLUS, et plus particulièrement du volet intitulé le "Coffre-Fun". J'ai assemblé le "Coffre-fun", avec beaucoup de soin et d'attention, sous différents thèmes tels que les animaux domestiques, les formes géométriques, le temps, les chiffres et les couleurs primaire et secondaire. On y trouve des activités, des jeux et de beaux livres pour les enfants âgés de 5 à 10 ans. Chaque "Coffre-Fun" offre à votre enfant et vous parents une façon plaisante d'enrichir le vocabulaire, tout en s'amusant. C'est pourquoi le slogan du "Coffre-Fun" est "J'apprends tout en m'amusant!". Plus tard, je développerai d'autres thèmes intéressants dont la musique et les animaux sauvages... Le but du "Coffre-Fun" est de s'assurer qu'il vous offre une qualité d'apprentissage complémentaire au travail fait à l'école et à la maison. Le "Coffre-Fun" sera à votre disposition et prêt à vous divertir. Quel bonheur!!

Venez me voir au 40, rue Birch ou appelez-moi au 864-2763, j'ai tellement hâte de vous rencontrer. Je vous attends



### YOUPI ! YOUPI ! C'EST LA RENTRÉE !!!

C'est le mois de septembre. Les vacances sont terminées et le rythme fou de la vie quotidienne reprend. Le travail, les lunchs, les devoirs, les leçons de patin et de gymnastique... Ouf ! Le niveau de stress augmente. Voici quelques petits conseils qui peuvent alléger les défis associés avec l'école.

#### Repas et lunchs

- Préparez un menu pour la semaine, y inclus les repas, les collations et les lunchs pour vous permettre de dresser une liste complète des ingrédients. Ceci vous évitera de nombreuses courses au magasin d'épicerie.

- Préparez des repas à l'avance avec vos enfants pendant la fin de semaine. Non seulement est-ce que ceci encouragera vos petits cuisiniers en herbe, mais vous profiterez ensemble des occasions d'apprentissage sans pareils associées avec la préparation des repas.

- Prenez le temps de manger tout ensemble. Discutez des événements de la journée, des loisirs, des actualités, tout en donnant à chacun la possibilité de prendre la parole. Quelle belle façon de développer la communication orale!

- Visez les lunchs sants. Pour éviter le stress matinal de la préparation des goûters que vos enfants mangeront, préparez à l'avance des petites portions de crudités, de fromage et de noix. Gare aux arachides, cependant ! Le matin, vous ou vos enfants n'auront qu'à les glisser dans le sac à lunch. Vous avez des enfants capricieux ? Rédigez une liste de bons aliments et de collations santé et suggérez-leur de préparer eux-mêmes le menu des goûters pour la semaine.

#### L'heure des devoirs

- Soyez organisés ! Désignez un endroit particulier propice au travail scolaire et assurez-vous que vos enfants ont tous les outils de travail près d'eux avant de se mettre à l'oeuvre. Montrez-leur la bonne façon d'utiliser leur agenda pour noter leurs devoirs et pour planifier les travaux à long terme.

- Votre enfant est aux prises face à une question ou un travail scolaire ? Visez les services d'aide aux devoirs. Vous pouvez rejoindre SOS Devoirs soit par internet au [www.sosdevoirs.org](http://www.sosdevoirs.org) ou par téléphone au 1.866.627.0609.

- Une attitude gagnante est primordiale ! Si vous vous plaignez de la corvée des devoirs, les enfants finiront par vous imiter. Mais si vous en faites un moment spécial centré sur le plaisir d'apprendre, ils accepteront plus volontiers de se mettre à l'oeuvre.

pour le lancement ce mercredi 8 septembre à 20h (8 p.m.). Le projet a besoin de vous chers parents pour sa réussite. Merci ! Au plaisir de vous saluer en personne chers parents et amis(es) de 5 à 10 ans.

Johanne Demers ;-))

- Vous n'êtes pas tenue de rester à côté de vos enfants lorsqu'ils font leurs devoirs. Travaillez à d'autres tâches dans la même pièce tout en les supervisant et en restant disponible. Vous prenez des cours ? Bravo ! Soyez l'exemple et faites vos devoirs avec eux.

- Présentez des blocs de temps propices pour les devoirs et permettez à vos enfants de choisir eux-mêmes quand ils les feront. Évitez de débiter les devoirs 30 minutes avant le coucher car ils seront trop fatigués pour concentrer et pour bien s'appliquer.

#### Pour une année scolaire réussie

- Soyez présents, tout particulièrement au primaire car les enfants ont besoin de l'aide de leurs parents avec les devoirs. Réservez un temps fixe pour ceci.

- Soyez vigilants dans les messages que vous véhiculez aux enfants quand vous parlez de l'école et des enseignants. Si vous avez des craintes ou des critiques, il ne faut pas les partager devant les enfants. Ceci évitera de transmettre à vos enfants vos anxiétés et de leur faire détester l'école.

- La lecture est la clé de la réussite scolaire. Incitez vos enfants à lire au moins 30 minutes par jour. Bandes dessinées, romans, magazines, peu importe ! L'essentiel est que vos enfants lisent.

- Développez une bonne relation avec l'enseignante ou l'enseignant. En participant régulièrement aux réunions de parents, vous pourrez mieux suivre le cheminement de votre enfant. En plus, l'école est gagnante quand les parents s'impliquent aux diverses activités.

- Vos attentes doivent tenir compte des capacités et des efforts de vos enfants. Si vous avez des attentes irréalistes, vous risquez de leur imposer un stress considérable et, sans vous en rendre compte, de l'amener à détester l'école.

- Pour bien réussir, les enfants doivent dormir suffisamment. L'horaire d'été ne doit donc pas se prolonger après la rentrée. Soyez ferme sur l'heure du coucher.

Vous recherchez des conseils additionnels ? Allez au [www.magazinmadame.ca](http://www.magazinmadame.ca) pour consulter autres articles reliés à la rentrée scolaire.

### BIENVENUE!

Au nom de la communauté francophone, l'École Sacré-Coeur, l'École secondaire catholique Trillium, FormationPLUS et le Centre culturel Louis-Hémon désirent souhaiter la bienvenue à tous ceux et celles qui ont décidé de venir s'installer dans notre magnifique petit village Chapleau.

Nous sommes confiants que vous aller adorer cette petite perle cachée dans le Nord de l'Ontario !

# Coffre-Fun

J'apprends tout en m'amusant!



Avez-vous des enfants âgés de 5 à 10 ans ?

Que diriez-vous d'un projet qui vous permettrait d'emprunter, pour trois semaines, une variété de jeux, de livres et d'activités à faire en famille ?

**Eh bien! FormationPLUS est ravi de lancer le "coffre-fun" !**

Ce "coffre-fun" est disponible sous différents thèmes tels que chiffres, formes, couleurs, animaux... Venez examiner ces coffrets d'or!

**Soyez des nôtres !**



**ce mercredi 8 septembre à 20h ( 8 p.m. ) au 40, rue Birch E (sous-sol du bureau de poste)**

Un léger goûter sera servi.

Pour plus de renseignements, appelez Johanne au 864-2763.



## Et si je retournais aux études...



retour aux études.

Les différents témoignages sauront convaincre les personnes qui ont certaines hésitations à retourner en formation en vue d'améliorer leurs compétences de base.

Donc, si tu songes à retourner aux études, FormationPLUS t'invite à venir visionner cette vidéocassette et par la suite discuter des possibilités de formation ici à Chapleau.

Nous avons deux présentations : une en soirée soit le mardi 7 septembre à 8 p.m. et une en après-midi le mercredi 8 septembre à 2 p.m. au 40, rue Birch (sous-sol du bureau de poste).

Nous le constatons à tous les jours : sans une formation de base adéquate, il est de plus en plus difficile de trouver un emploi stable, valorisant et bien rémunéré. Le milieu de l'emploi n'est plus ce qu'il était.

Aujourd'hui, les employeurs exigent que leurs employés aient une formation qui leur permette

Une vidéocassette a été préparée, par le Centre "Moi, j'apprends", visant à faire valoir le retour aux études auprès des adultes qui ne possèdent pas les compétences de base nécessaires pour satisfaire aux exigences du marché du travail.

Quelques apprenants adultes acceptent à ce jour

J'ai tellement hâte de retourner à l'école! Cette année, je vais vivre des expériences comme nulle part ailleurs.

Merci maman et papa d'avoir choisi une école catholique de langue française!



**Au plaisir de vous accueillir à l'École Sacré-Coeur et à l'É.s.c. Trillium le mardi 7 septembre 2004**

**Conseil scolaire catholique du Nouvel-Ontario**

201, rue Jogues Sudbury (Ontario) P3C 5L7 (705) 673-5626 ou sans frais 1 800 259-5567

# SKATER NEWS

We had our "End of Summer" dance on Thursday, August 26<sup>th</sup> and 4 kids came away with some cool Togues and one guy won a new Skateboard!

All this would not have been possible without the help of some really dedicated volunteers from the Chapleau Community Policing Association. Nellie Mitchell, Marion Cockburn and Lise Lafreniere helped us chaperon the dance and Marilyn Plourde, Roxanne Metlin and Barb Pyke from the Skateboarding Committee sold pop, chips and chocolate bars all evening. Gabe Taylor had Levi Plourde and Christina Jewett do the music for us which had everybody up dancing.

We also wanted to thank the Royal Canadian Legion for letting us have the dance there and Roger Perrault helping us out with the pop, chips and chocolate bars.



As the summer is over we will be taking apart the "Funbox" and taking it out of the Public School Yard. We will be storing it away for the winter in hopes of being able to bring it out into our new Skatepark along with some new apparatus in the summer of 2005.

We will be working throughout the winter, looking for the right location and we will be doing some heavy duty fundraising to

finance the construction. We are also going to need some heavy duty HELP from you kids! This is going to be your park so you are going to have to help us out or we can't do it and there will not be a Skatepark or a place for kids to hang out.

Meetings are every Tuesday, at 7:00 pm at the MNR Conference Building, please plan to attend and be a part of this project.

## Local Radio Shack Store Receives National Award



Lucy Bignucolo was awarded RadioShack Canada's Dealer Division Gold Star Award for District 0762, Northern and Eastern Ontario. The award is presented to the store with the highest level of sales performance and overall store appearance. The Gold Star Trophy was awarded to only seven dealers Canada wide. Congratulations!

## Dates for Winter Carnival are set

Organizers are getting an early start in organizing the annual celebration of winter.

The Township Council last Monday approved February 17 to 20 to as the dates for the 2005 annual "Taste of the North" Winter Carnival.

The Culture and Leisure Services Committee, under whose organizational umbrella the annual extravaganza falls, had recommended the dates at its last regular meeting.

The last edition of the carnival was termed a gigantic success in many respects. In addition to some new attractions and elimination of others, the winter carnival, broke even.

## Our Lady of Fatima making good use of new technology

Many of the staff at Our Lady of Fatima Catholic School were busy learning new technology in Sault Ste. Marie this August.

They studied how to make classroom websites and DVD movies. They had the

opportunity to work through Webquests and learn how to apply them to their own classrooms. Project-based learning and Centres were also emphasized.


Webquests are internet-based

activities in which students are given a series of tasks on a certain topic. They must research their topic using specific internet addresses.

The topics are cross-curricular and meet the Ontario Ministry of Education's Grade Level expectations. This use of Information Technology is one more way in which Our Lady of Fatima staff are working towards project-based and hands-on learning.

Attending the workshops were Educational Assistant Crystal Connelly, Principal Michael Levesque and Teachers Flavia Bruneau, Elaine Martel, Vicki St. Amand, Kathy Pagnotta and Maria Salazar.

The staff at Our Lady of Fatima is ready to greet their students with new technology, new ideas and activity-based learning.



Sudbury & District Health Unit

The Sudbury & District Health Unit is a fully accredited Teaching Health Unit, affiliated with Laurentian University. We are seeking **PARTNERS IN PARENTING** on a casual basis for our Healthy Babies Healthy Children Program in Chapleau and area.

**PARTNERS IN PARENTING**  
Casual Positions

The incumbent is responsible to promote the healthy growth and development of children by supporting families in their homes during pregnancy and until children are 6 years old. Duties will include providing information and support and connecting parents and children with community programs and resources.

We are looking for individuals with:

- ⇒ Grade 12 education with good verbal and written skills.
- ⇒ Ability to work in a team environment
- ⇒ A familiarity with special needs of the community to be served (e.g. adolescents, Francophone, low socio-economic status).
- ⇒ Well-developed written skills.
- ⇒ Experience as a parent and possessing a genuine interest in working with and assisting families with young children who are facing challenging life situations.
- ⇒ A flexible schedule.
- ⇒ A demonstrated ability to effectively problem-solve and the ability to help others to solve their own problems.
- ⇒ A satisfactory police screen.
- ⇒ Their own transportation.
- ⇒ Bilingualism an asset.

Resumes will be accepted until Monday, September 13, 2004 at 4:30 p.m. and should be sent in confidence to:

Ms. Nicole Proulx  
Divisional Administrative Assistant  
Sudbury & District Health Unit  
1300 Paris Street, Sudbury, Ontario, P3E 3A3  
e-mail: [proulxn@sdhu.com](mailto:proulxn@sdhu.com) (Microsoft Word Document ONLY)  
Fax: (705) 522-5182

All applications and resumes will be reviewed, but only those selected for interviews will be contacted.


The SDHU is an equal opportunity employer and provides a smoke-free environment.

All information is collected solely for the purposes of job selection under the provisions of the Municipal Freedom of Information and Protection of Privacy Act.



**CHAPLEAU ANNUAL  
ARTS & CRAFTS  
FALL FAIR** 

Friday, October 15th & Saturday, October 16th.  
If you wish to enter a booth,  
pick up your application form at the  
Canada Brokerlink office on Birch Street.  
For more information,  
telephone Maureen at 864-0891.



**SCOUTS REGISTRATION**

For Boys and Girls

Wednesday September 8, 2004  
6:00 p.m. to 7:30 p.m

At United Church

Beavers: (Age 5-7)  
Cubs: (Age 8-10)  
Scouts: (Age 11-14)  
Venturers: (Age 14-17)

Registration Fee: \$130  
Reduced fee for 3<sup>rd</sup>  
and subsequent siblings \$65.00



## In a Rut? Need a Change? New Career?

- \*enter credit courses
- \*improve communication skills
- \*return to school
- \*enhance computer skills
- \*access the Internet
- \*design your training plan

**Improve your reading, writing, speaking, math and basic computer skills**

**Free - full time - part time - flexible hours**

## Call Chapleau Learning Centre

Adult Education  
Algoma District School Board  
864-2323 Learn for Life

**Literacy and Basic Skills**

Funded by Ministry of Training, Colleges and Universities

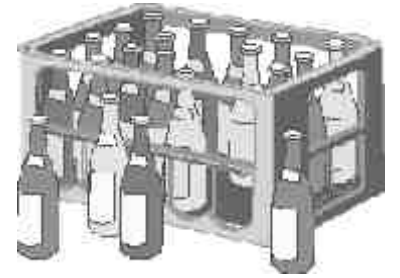
**Looking for a gift that will last the whole year?  
Look no further. Buy a subscription of the  
Chapleau Express for out-of-town friends & family.**



Chapleau Minor Hockey Association is planning to have Mitron High Performance Hockey Centre return to Chapleau again this year. The Hockey School will take place on October 1, 2 & 3rd.

To offset some of the costs, we are planning a Bottle Drive on Saturday September 11th from 10:30 a.m. to 2:00 p.m.

All players participating in the bottle drive will have a chance to win a free registration for the hockey school.



If you have bottles you would like to donate but will not be home on Saturday the 11th, please leave them outside your door with a note attached!

Thank You for your Support!

## Sans emploi ? Destination carrières est prêt à vous aider.

- ➔ Consultation individuelle
- ➔ Testage
- ➔ Appui à la recherche d'emploi

destination > carrières  
services d'emploi



career link > centre  
employment services

- ➔ Programmes de retour à l'emploi
- ➔ Ateliers

■■■■➔ **Résultats**

Financé par **Canada**

À Chapleau, composez le 1-800-361-6673 poste 4010 pour faire un rendez-vous.

## Are you unemployed ? Career Link Centre can help you.

- ➔ One on one career counselling
- ➔ Testing
- ➔ Job search support

destination > carrières  
services d'emploi



career link > centre  
employment services

- ➔ Return to work programs
- ➔ Workshops

■■■■➔ **Results**

Funded by **Canada**

To schedule an appointment in Chapleau, please call 1-800-361-6673 ext 4010



## Another successful Summer Story Hour at the Chapleau Public Library

On Tuesday, July 6<sup>th</sup> and ran until August 17<sup>th</sup>, Chapleau Public Library hosted a party marking the end of another successful year was "Fire Up Your Summer Story Hour. Imagination with Story Hour began on Dragons". Each week,



the children enjoyed a craft or a game followed by a dragon story. A Dragon Hand Puppet, which the children named Dudley, became the main attraction. Every week, the participating children's names would go into the draw box for which they would have a chance to win "Dudley".

The party was very successful again this year. We had 22 children come out. They enjoyed a game of musical chairs and dancing followed by cake and refreshments. Mallory Pellow was the lucky winner in the



draw for "Dudley", while Cyann Aldeman, Austin Jean and Courtney Evans all took home prizes as well. No one left empty handed though as Dragon posters, stickers and activity books along with a Participation

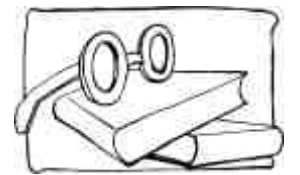
Award were also handed out.

The Library would like to thank the Toronto Dominion Bank Financial Group for sponsoring the program and also the "Friends of the Library" group which assisted

with the purchase of arts and crafts supplies.

A special thank you also goes out to Tegan and Miranda Purdy for volunteering their time each week and helping out. "Thank you girls, it was very much appreciated".

And last, but certainly not least, a special thanks to all the children who participated, as the program would not be a success without you.



## Township council rejects call to participate in local forest company business plans

A suggestion that the Township of Chapleau be included in developing any business plans associated with lumber companies operations locally has been rejected by the municipal council.

The idea was proposed at last Monday's regular meeting of township council by Councillor Richard Bignucolo in

response to statements on a web site maintained by forestry watchdog North watch It quotes MNR sources stating across the Boreal Forest zone, wood supply is predicted to fall below the level of industrial demand in the near future.

The spruce-pine-fir supply is forecast to fall below the demand level in five to ten

years, while the poplar supply is forecast to fall below demand in 15 years.

Councillor Bignucolo said he wanted council to become involved in lumber company business plans because they are tied to the wood that is associated with the mills. "Ask the companies that we be part of those business plans", said the Councillor.

Chapleau is home to two lumber mills. One is operated by Domtar while the other is operated by Tembec.

The total work force in the sawmills alone is approximately 260. The companies harvest their raw material from the Pine Island-Martel and Superior Forests under management plans with the Ministry of Natural Resources.

Councillor Paul Bernier, an employee of the MNR, said much information about the various forestry company

plans were already public knowledge through various process involved in developing management plans.

"I have a problem", stated Mayor Freeborn in response to Councillor Bignucolo's proposal. "We have tried to have a good relationship with the companies", stated the Mayor, adding: "This is not a proper thing to do."

"We're not asking for a bad relationship", replied Councillor Bignucolo who offered to withdraw his resolution asking to be included in business plan development.

"I have no trouble with it going forward, just not under my signature", stated the Mayor. "OK, I'll drop it", said Councillor Bignucolo.



## Summer is over – job hunting time

(NC)-With Labour Day and summer holidays behind you, it's time to pursue that dream job. Here are some tips from Monster.ca, Canada's leading online career resource:

### 1. Job hunting is a demanding full-time job

The right frame of mind is crucial, so here are some thoughts to keep you on track:

- Job hunting is about promoting yourself and your talent
- Know how your talent can benefit employers
- Follow a plan but be flexible

### 2. How well do you really know yourself?

Identify and write down your interests, skills, values, needs, strengths, weaknesses and work habits, to determine which job is right for you.

### 3. Know Your Objectives.

What type of position do you want? What type of work do you enjoy? Do you have geographical preferences? Knowing exactly what you want leads to better results.

### 4. Create a Career Portfolio that includes:

- Sample cover letters, letters of inquiry or application, correspondence from employers
- An updated resume
- Letters of recommendation
- School or college transcripts, diplomas, degrees
- Awards, citations

### 5. Target Employers.

Research potential employers and identify who is a good fit. Find employers who need your talent and contact the person responsible for hiring to set up an information interview.

- News Canada

### CHAPLEAU RESIDENTS INVITED TO HELP WITH ECONOMIC DEVELOPMENT STRATEGY

The Chapleau Community Adjustment Committee received funding from FedNor and the Ministry of Training, Colleges and Universities to develop a five-year plan and identify new opportunities for job creation.

The Committee, made up of several Chapleau residents representing each sector of the economy, met several times over the Spring time to identify some opportunities and is now calling a public meeting to ensure that all avenues have been explored.

The public meeting will occur on September 15, 2004 at Town Hall from 7:30 p.m. to 9:00 p.m. Everyone is welcome to join us for an evening of discussion over coffee. For more information, please contact Dr. Sylvie Albert, Chair, at 264-4049.

The Chapleau Child Care Centre de Garde d'Enfants  
Ontario Early Years Program Site  
has an opening for a  
Bilingual Program Staff

Skills and Qualifications Required:

- E.C.E. Diploma or equivalent
- Experience working with children, families and caregivers
- Standard First Aid and C.P.R. certificates
- Criminal Reference Check
- Up-to-date immunization records
- Good communication skills (written and verbal) in both French and English
- Licensed to drive, with access to a vehicle (could involve regular travel)
- Ability to comply with the confidential nature of the position
- Ability to maintain a professional attitude at all times
- Demonstrated planning and organizational skills
- Team approach and strong interpersonal skills

This is a part-time position with a minimum of 15 hours per week (to include two evenings a week and Saturdays).

Salary commensurate with experience and qualifications.

Please forward resumes to:

Ginger Forget - Executive Director  
c/o Chapleau Child Care Centre de Garde d'Enfants  
P.O. Box 969  
Chapleau, Ontario  
POM 1K0

The closing date for applications is September 17, 2004.

We would like to thank all applicants for their interest. Only those selected for an interview will be contacted.

Cet offre d'emploi est disponible en français en composant le 864-1886.

# Street proof your child

(NC) - Child safety is a growing concern among parents and many wonder if they have adequately prepared their children to be street smart.

Responding to this need, a number of Boys and Girls Clubs across Canada offer

street proofing courses as part of their after-school programs.

Protect your children by teaching them:

- Their name, address and telephone number
- To dial "911" in an emergency

- To talk to you when they feel unsafe

- To keep you informed as to their whereabouts at all times

- Never to travel or play alone, always be with a friend

- To trust their feelings and say "No" to an adult if that adult wants them to do something that is wrong

- Not to accept gifts from strangers

- That if they are being followed or approached too closely, to run home or to go to the nearest public place and yell for help

- Never to enter anyone's home without your permission

For more tips on street proofing your child visit Boys and Girls Clubs of Canada at [www.bgccan.com](http://www.bgccan.com).

- News Canada

The following **Parenting Programs** are being offered at the **Toy Library/ Ontario Early Years Program** located at the **Chapleau Child Care Centre**

**Connect with Your Baby**

For parents with infants from birth to 1 year, Four sessions starting **Wednesday, September 8, From 1:15 3:15 p.m.**

**Nobody's Perfect**

For parents with children from birth to 5 years of age,

Six evening sessions starting **Thursday, September 16, 6:30 8:30 p.m.**

To register or for more information call Eileen at **864-1886**



**ENSEIGNANTES OU ENSEIGNANTS**

**ÉCOLE ST-JOSEPH, BLIND RIVER**

- (1) . poste permanent (septembre à juin) - 6%  
Éducation artistique (75 minutes)  
qualification de base au cycle primaire

- (2) . poste ALF (septembre à juin) - 40%  
qualification de base aux cycles primaire et moyen

- (3) . poste permanent (septembre à juin) en 7<sup>e</sup> et 8<sup>e</sup> année - 100%  
qualification de base au cycle intermédiaire

**ÉCOLE ST-JOSEPH, ESPANOLA**

- (1) . poste permanent (septembre à juin) - 6%  
Éducation artistique (75 minutes)  
qualification de base au cycle primaire

**ÉCOLE SACRÉ-COEUR, CHAPLEAU**

- (1) . poste à long terme (septembre jusqu'à avis contraire) en 2<sup>e</sup> année - 100%  
qualification de base au cycle primaire

- (2) . poste ALF (septembre à juin) - 40%  
qualification de base aux cycles primaire et moyen

- (3) . poste temporaire (septembre à juin) en 8<sup>e</sup> année - 100%  
qualification de base au cycle intermédiaire

**ÉCOLE NOTRE-DAME-DES-ÉCOLES, SAULT STE. MARIE**

- (1) . poste ALF (septembre à juin) - 40%  
qualification de base aux cycles primaire et moyen

**ÉCOLE STE-ANNE, SPANISH**

- (1) . poste temporaire (septembre à juin) en 3<sup>e</sup> et 4<sup>e</sup> année - 100%  
qualification de base aux cycles primaire et moyen

**ÉCOLE SAINT-JOSEPH, WAWA**

- (1) . poste ALF (septembre à juin) - 40%  
qualification de base aux cycles primaire et moyen

**EXIGENCE DES POSTES**

- membre en règle et carte de compétence de l'Ordre des enseignantes et des enseignants de l'Ontario

**PRÉSENTATION DES DEMANDES**

Les personnes intéressées sont priées de faire parvenir leur demande, accompagnée d'un curriculum vitae à jour, au plus tard à 16 heures, mardi le 7 septembre 2004, soit par la poste, à l'adresse ci-dessous, soit par télécopieur au (705) 669-1271 ou sans frais au 1-866-452-0034.

Donald Malette, directeur du Service des ressources humaines  
201, rue Jogues Sudbury (Ontario) P3C 5L7

En vertu du règlement 322/02, toute personne employée par un conseil scolaire doit fournir un relevé de ses antécédents criminels avant d'entrer en fonction.

Marcel Montpelliér  
Président

Hélène C. Chayer  
Directrice de l'éducation

Vision 2007 : Des services pour l'épanouissement de chacun, chacune !



**Employment Opportunity  
Chapleau Public Library  
Assistant Librarian II  
(approximately 20 hours a week)**

Requirements:

- possess excellent written and oral communication skills
- possess word processing skills
- ability to perform internet searches
- ability to work with minimum supervision and prioritize tasks
- ability to work as a team
- ability to work with the public
- bilingualism an asset
- available to work evenings and on Saturday

Closing date: September 15, 2004

Forward resume and covering letter to

**Chapleau Public Library  
P.O. Box 910  
Chapleau, ON P0M 1K0**

Only those selected for an interview will be contacted.



**Student Employment Opportunity  
Chapleau Public Library  
To run until March 31, 2005**

This position is made available through funding provided in partnership by CRDC and OLA to the CAP Youth Employment Initiative. The successful candidate will provide participants instruction in:

- word processing
- scanning, editing and printing photographs
- creating an email account
- performing online banking, shopping and online searches

Requirements:

- 15 - 30 years of age
- currently in school
- available to work daily during the March break
- available to work after school, evenings and on Saturday
- ability to work with minimum supervision and prioritize tasks
- ability to work with all ages at their level
- bilingualism an asset

Closing date: September 22, 2004

Forward resume and covering letter to

**Chapleau Public Library  
P.O. Box 910  
Chapleau, ON P0M 1K0**

Only those selected for an interview will be contacted.

**Chapleau Valu Mart  
has an immediate opening  
for a part-time position  
in the bakery department**

Duties/Responsibilities:

- baking
- cake decorating

Qualifications:

- good customer service
- must be available weekends

Please send resume to:

Lynn Bignucolo  
P.O. Box 100  
Chapleau, Ontario P0M 1K0

**Dr. Allan MacIvor  
OPTOMETRIST**

Chapleau Medical Clinic, Broomhead Rd.

\*Tuesday, September 14, 2004\*

10:00 a.m. To 8:15 p.m.

**FOR APPOINTMENTS CALL**

**Toll Free 1-800-461-2883**

**CALL 864-2340**

## THE LOCAL MARKET PLACE

## THE LOCAL MARKET PLACE

ALL ADS ARE ACCEPTED AT Louis-Hémond Cultural Centre (69 Birch Street)

DEADLINE FOR RECEIVING ADS IS WEDNESDAY 4:00 p.m.

CLASSIFIED ADVERTISING RATES  
Regular Classified Ads  
First 25 words or less \$6.00  
Each additional word \$0.15+GST

### CHADWIC HOME, FAMILY RESOURCE CENTRE

Offers shelter, emotional support, and information for women and their children who are in crisis situations. We have a Toll Free Crisis Line which is staffed 24 hours a day. We can arrange for free transportation to the Centre for women who live in the Algoma/Chapleau area. We also offer support to women who live in the communities of Chapleau, White River, Dubreuilville, and Hornepayne through our Outreach Program. Our Outreach Worker travels to those communities to meet with women who need emotional support as well as information about their rights and options. If you need to speak with the Outreach Worker when she is in your community, you can call the Centre at any time to set up an appointment. You do not need to be a resident of the Centre in order to use our services. If you need someone to talk to or if you just need someone to listen, call our Toll Free Crisis line at 1-800-461-2242 or you can drop in at the Centre. We are here for you.

### BUSINESS OPPORTUNITY

Approx. 4000 sq/ft space now available in the downtown core. Premise was operated as a restaurant and bar. Can be adapted for any use including offices or retail outlets. Interested party inquire at 37 Birch St. or at 864-1367. S26 (8 weeks)

### FOR RENT

1 Bedroom Apartment - Fridge & Stove, laundry facilities, secured storage, parking & outdoor plug-in included. Utilities extra. Available immediately. Contact: Bertrand Apartments - (705) 864-0230 - Graham & Rose Bertrand S12

### FOR RENT

Two 1 bedroom apartments available for rent October 1, 2004. Furnished, utilities paid. Call or leave message 864-0966. S19

**Need to put the word out? Don't worry... call the Chapleau Express**

### FOR RENT

2 + 1 bedroom house for rent. Central location. Close to school. W/D hookups - ample parking, electric/woodstove heat (woodstove provided). First and last month plus utilities connexion. Available immediately. Call 864-1234, ask for Nicki. S26

### APARTMENTS FOR RENT

You need a decent apartment, with one or two bedrooms, semi-furnished or not, dryer and washer hook-up, outdoor balcony, storage shed, private parking. Central location. Call Quality Rental at 864-9075. D5 (20 weeks)

### APARTMENT FOR RENT

Recently renovated, one bedroom apt. at 22 Lansdowne S. Fridge, stove and parking included. Available Sept. 30 at \$395 per month. Call Con Schmidt at 864-0617 S5

### APARTMENTS FOR RENT

Clean 1, 2 & 3 bedroom apartments. with storage, central location. Call 2217 or 2410 S12

### APARTMENT FOR RENT

2 bedroom, fridge & stove. Winter plugin c/o laundry. Call 864-0138 AW

### FOR SALES

3 bedroom townhouse, 2 bathrooms, propane fireplace, central air conditioning, heated ceramic floor, outdoor hot tub, indoor jacuzzi tub, new windows and doors. Asking \$75,000. Phone 864-2699 S26

### FOR RENT

3 bedroom apartment for rent. W/D hook-up. Fridge and range included. Detailed - ask 864-1469 S12

### FOR RENT

Newly renovated large one bedroom apartment. Central location. Available October 1st, 2004. Phone 864-1369

### SLOMA CLEANERS

Now in Chapleau on Tuesday & Thursday

### BERRY'S FREIGHT SERVICES

TIMMINS - CHAPLEAU - TIMMINS

MONDAY TO FRIDAY 1lb. to 10,000 lbs.

FOR QUALITY SERVICES AT INEXPENSIVE PRICES GIVE US A CALL AT

1-705-264-4334

### ALCOHOLICS ANONYMOUS

Offers help to anyone who desires to stop drinking. Open discussion meetings: Wednesday 7:30 p.m. & Sunday 2:00 p.m. Trinity United Church basement. Telephone contacts: 864-2321 and 864-1827 Ladies call 864-0138

### ARTICLES FOR SALE

1 entertainment centre, tools, 3 bikes, 2 electric stools, 1 queen bed, 2 single beds, 2 night tables, 2 sofas, 1 wood stove, inside & outside doors, Sharp music centre, some fishing gear, 1 fridge, 2 chairs, 1 wood cooking stove, & lots, lots more. Call Island Lake 861-0827. AW

*Reliable and sure.*

You can always count on our classified ads to bring results.

The Chapleau Express

Call us, and reap the benefits.

### FOR RENT

Large 1 bedroom apt. Very clean, quiet building, centrally located. Call 864-2670 or leave message. S5

### FOR SALE

Camp on Borden Lake, Chapleau. 3 bedroom, low maintenance, metal siding, fully furnished, turn key, carpet floors, screen porch, good well-running water, inside outside toilet, shower room, storage shed & boat shed, 2 propane fridge & stove, oil space heater, fully insulated, winter use, 2 way lights & generator, 1 acre + lot. 705-328-3318 (Lindsay) S5

### HOUSE FOR RENT

4 bedroom house. Electric heat, wood stove & garage. Available Sept. 1st. Call Twyla 864-0581 from 10-5. Leave a message at night. S5

### FOR SALE

Hotpoint three door fridge \$175. White truck cap fits small truck like Mazda or Toyota \$50. Washing machine asking \$200. 4 BF Goodrich Tires 31x10.50 on 15" aluminum after marker rims 6 stud fits Chev, Toyota, Mazda \$350. Phone 864-1727 S5

### ALCOOLIKES ANONYMES

Offre de l'aide à celui ou celle qui désire arrêter de boire. Les rencontres ont lieu tous les mardi soirs à 19h (7:00 p.m.) Au sous-sol de l'église Sacré-Coeur. Téléphonez au 864-2786 Les femmes 864-0138

# BINGO

CENTRE CULTUREL LOUIS-HÉMON  
Where: Loyal Order of the Moose



CHAQUE MERCREDI à/at 7:15 P.M. EVERY WEDNESDAY

Super Jackpot in 58 numbers or less

## 101 GAS STATION & CONVENIENCE STORE

OPEN 24 HOURS  
BRUNSWICK HOUSE FIRST NATION - HWY 101  
REGULAR & PREMIUM GAS  
DIESEL ALSO AT A LOWER PRICE  
WE SELL A VARIETY OF SNOWMOBILE PRODUCTS  
SPARK PLUGS - SNOWMOBILE OIL - OCTANE BOOST BELTS & ACCESSORIES  
AUTOMOBILE PRODUCTS  
MOTOR OIL - GAS LINE ANTIFREEZE & CONDITIONER - BRAKE FLUID - ANTIFREEZE - WINDSHIELD WASHER FLUID - ETC.  
NAME BRAND & NATIVE BRAND TOBACCO PRODUCTS  
CALL 864-0330

## NEED APPLIANCE PARTS?

We sell parts for all makes and models of Major Household Appliances. Free shipping on all parts orders over \$50.00 before taxes. (Within the Chapleau Area) We also provide service in Chapleau on a weekly basis.

**CALL COLLINGS APPLIANCE SERVICE**  
1-705-264-1708

Or e-mail us at: lancecc@ntl.sympatico.ca  
FOR ALL YOUR APPLIANCE NEEDS

## GOING TO CHURCH

Catholic Church  
SACRED-HEART OF JESUS PARISH  
PAROISSE SACRÉ-COEUR DE JÉSUS  
26 Lorne Street North  
-OFFICE-  
21 Lansdowne Street N.  
864-0747  
Saturday/samedi 7 p.m. (Alternating French and English)  
Sunday/dimanche 10 a.m. (Alternating French and English)  
Fr. Gilles Grandmont

ST. JEAN DE BRÉBEUF (Sultan)  
Liturgy of the Word  
Liturgie de la parole  
Sunday/dimanche 11 a.m.  
Bilingual Mass every 3rd Sunday of the month at Noon  
PERMANENT DEACON  
Mr. Ted Castilloux  
MANDATED  
Mrs. Marguerite Castilloux

Diocese of Moosonee  
Anglican Church of Canada  
ST. JOHN'S CHURCH  
4 Pine Street West  
864-1056  
Sunday Service 10:30 a.m.  
Rev. Bruce Roberts

ST. MARY'S ANGLICAN CATHOLIC CHURCH  
78 Devonshire Street  
864-0909  
Sunday Service 10 a.m.  
Rev. William P. Ivey

CHAPLEAU PENTECOSTAL CHURCH  
9 Elm Street (P.A.O.C.)  
864-0828  
Sunday School 9:45 a.m.  
Sunday Services 11 a.m. & 7 p.m.  
Family Night (ages 1-109)  
Wednesday 7 - 8:15 p.m.  
Pastor Dan Lee

TRINITY UNITED CHURCH  
Corner of Beech and Lorne - 864-1221  
Sunday Worship 11 a.m.  
Sunday School  
Kindergarten to Grade 8  
Nursery  
Pastor Rolly MacLean

OUR LADY OF SEVEN SORROWS PARISH  
PAROISSE NOTRE-DAME-DES-SEPT-DOULEURS (Foleyet)  
Liturgy of the World  
Sundays 11 a.m.  
Liturgie de la Parole  
Dimanche 11h  
Mass every 4th  
Saturday at 7 p.m.  
Mess le 4e Samedi 19h

COMMUNITY BIBLE CHAPEL  
Corner of King and Maple  
864-0470  
Communion Service 9:30  
Family Bible Hour 11 a.m.  
Including Sunday School  
Evening Bible Study and Ladies Bible Study during the week  
Transportation available  
Al Tremblay



## LAMON MOTORS LIMITED

24 HOUR TOWING

CHEVROLET - OLDSMOBILE - PONTIAC - BUICK - GEO

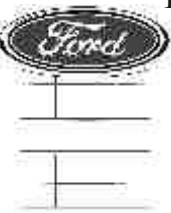
TRAVIS GENDRON  
Sales Consultant

P.O. Box 710  
Wawa, Ontario  
POS 1K0

FAX: (705) 856-4290  
BUS: (705) 856-2394  
RES: (705) 856-1185

## Northern Lights Ford Sales

Andrew G. McKenzie  
11 Years of Service



Highway 17, North  
P.O. Box 1033  
Wawa ON. POS 1K0  
Bus: 705.856.2775  
Fax: 705.856.4862  
sales@northernlightsford.ca

## BRUNSWICK HOUSE RECREATION BINGO

**\*EVERY THURSDAY\***  
**START TIME - 7:15 p.m.**

Under New Management

# Attention Chapleau Express Out-of-Town Subscribers

An announcement to all subscribers: The usual renewal date of September 1 has been pushed back to October 1, 2004. Please fill out the form below and return before the new renewal date to ensure your subscription.

*IF WE HAVEN'T HEARD FROM YOU BY OCTOBER 1st, WE WILL ASSUME YOU DO NOT WANT IT CONTINUED AND YOUR SUBSCRIPTION WILL BE CANCELLED.*

*Thank you*

NAME: \_\_\_\_\_

ADDRESS: \_\_\_\_\_

CITY/TOWN: \_\_\_\_\_

PROVINCE: \_\_\_\_\_

POSTAL CODE: \_\_\_\_\_

ONE YEAR : \$60.00 (incl. GST)

Please mail this form with your cheque or money order to:  
Chapleau Express  
P.O. Box 457  
Chapleau (Ontario) P0M 1K0

*With the Chapleau Express, you stay connected.*



## Back to School



### JEANS

Silver, Manager,  
Point Zero

NEW WASH  
NEW STYLE  
FOR FALL 2004

**SAVE \$10.00**

**ALL THE LATEST COLOURS  
BLOUSES, SWEATERS, TOPS  
FROM \$23.98**

Point Zero, French Dressing, Soft Works

Matching

Jackets & Pants

*perfect  
for the office*

**ALL Silver  
Jewellery**

on floor stand

**1 1/2 price**

selected  
Decorative

**Storage Boxes**

**1/2 price**

**ALL Lace**

runners, doilies, placemats  
tablecloths

**40% off**

## Chapleau Village Shops

a division of Bignucolo Inc.  
8 BIRCH STREET EAST · CHAPLEAU



# END OF SUMMER CLEARANCE SALE

Propane BarBQues **25% OFF**

**1/2 Price** All BBQ Accessories

Remainder of Bikes - Bike Accessories **50% OFF**

All Pools, Pool Supplies, Coolers,  
& Summer Sporting Goods

**All 1/2 Price**

Summer Trellis & Cedar Fencing, Rain Barrels,  
Table legs, Composters & Summer Planters,  
Spreaders, Garden Carts **50% OFF**

Fishing Tackle, Pod & Reels

**All 1/2 Price**

1 only 8x8 Solid Vinyl Storage Shed  
reg. \$839.999 **SALE \$499.99**

Sheep & Cow Manure  
reg. \$2.29 **SALE \$1.49/bag**

1 only 10x13 Storage Shed  
reg. \$759.99 **SALE 449.99**

3.8 Cu. Ft. Peat Moss  
reg. \$6.48 **SALE \$3.99**

5.5 Cu. Ft. Peat Moss  
reg. \$8.99 **SALE \$4.99**



**Home  
hardware  
building centre**



**All sales cash & carry, and final**